

2018 GRADUATE REPORT

Employment & Transfer Statistics





Dear Friend of Southeast Community College,

On behalf of the Board of Governors, the alumni, faculty, staff, and students of this excellent institution, I am pleased to present Southeast Community College's Graduate Report. The report includes graduation and employment statistics associated with 2018 graduates from all of our applied technology and transfer programs.

The report includes the total number of graduates, the number employed within the training-related field, the number continuing their education, the percent employed within Nebraska, and the average salary for SCC graduates. In addition to graduation and employment statistics, the report includes employers and transfer colleges and universities associated with each of SCC's programs.

This report represents one of our many efforts to evaluate the success of our programs and the degree to which we are accomplishing our mission.

SCC is committed to its mission of providing the highest quality applied technology and academic education opportunities to its 15-county service area. In 2018, SCC had nearly 1,500 graduates, with 94 percent employed or continuing their education. Eighty-seven percent of our employed graduates are working in Nebraska. SCC is vital to the local economy by providing skilled workers and adding property and tax income by training and graduating wage earners.

SCC has a long history of ensuring that employers have access to qualified graduates who have the skills needed for successful and productive employment. SCC continually seeks to align its programs with the specific needs and requirements of employers and transfer institutions. We are committed to meeting the educational needs of our students, employers and the community.

Sincerely,

A handwritten signature in black ink, which appears to read "Paul Illich". The signature is fluid and cursive, with a large, stylized initial "P".

Paul Illich, President
Southeast Community College



The mission of Southeast Community College is to empower and transform its students and the diverse communities it serves. The College provides accessible, dynamic, and responsive pathways to career and technical, academic transfer, and continuing education programs. Student success and completion is maximized through collegiate excellence, exemplary instruction, comprehensive student support services, enrichment programs, and student-centered processes. SCC is committed to a proactive and evidence-based approach that continually assesses and responds to student, community, and employer demand for higher education.

94%

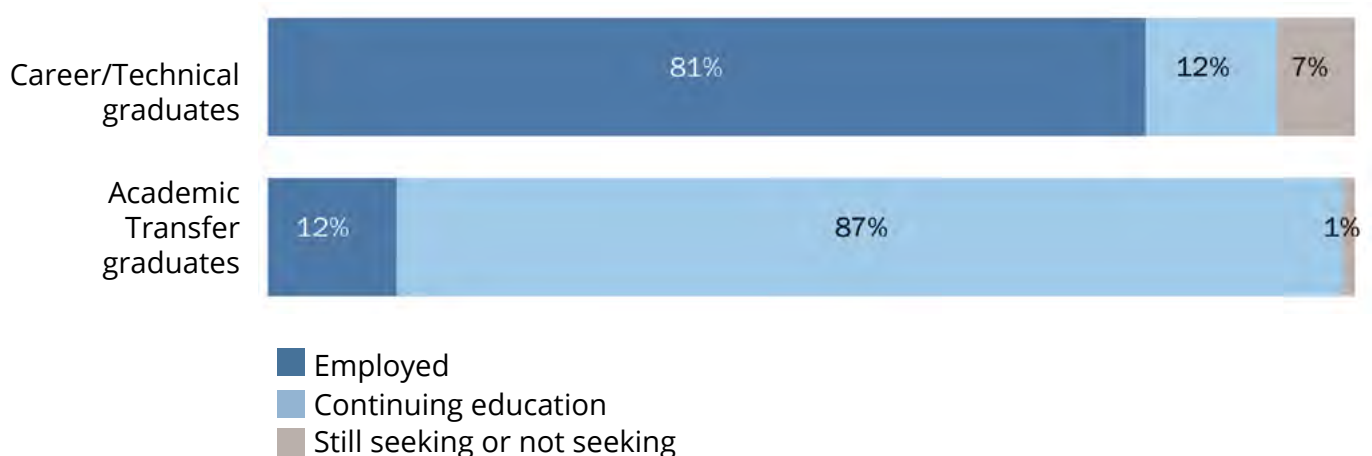
SUCCESS RATE

SCC graduates who are employed or continuing their education.

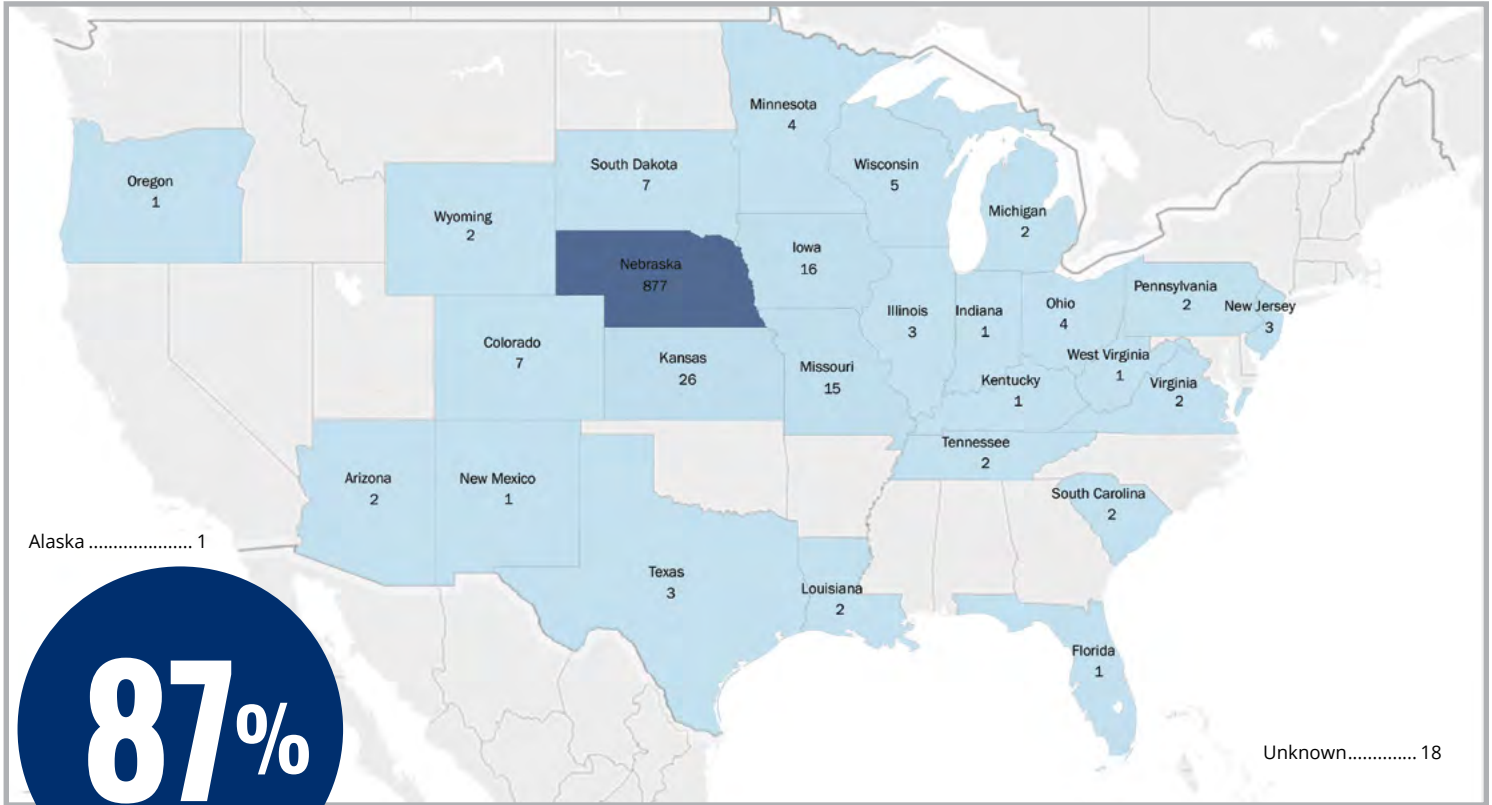
Of 1,492 graduates during the 2018 year, 6.4% of those who responded were not employed or continuing their education.

Employment and Transfer

A large majority of the 1,226 graduates from Career/Technical fields who responded are employed (81%), and a large majority of the 177 Academic Transfer graduates who responded are continuing their education (87%).



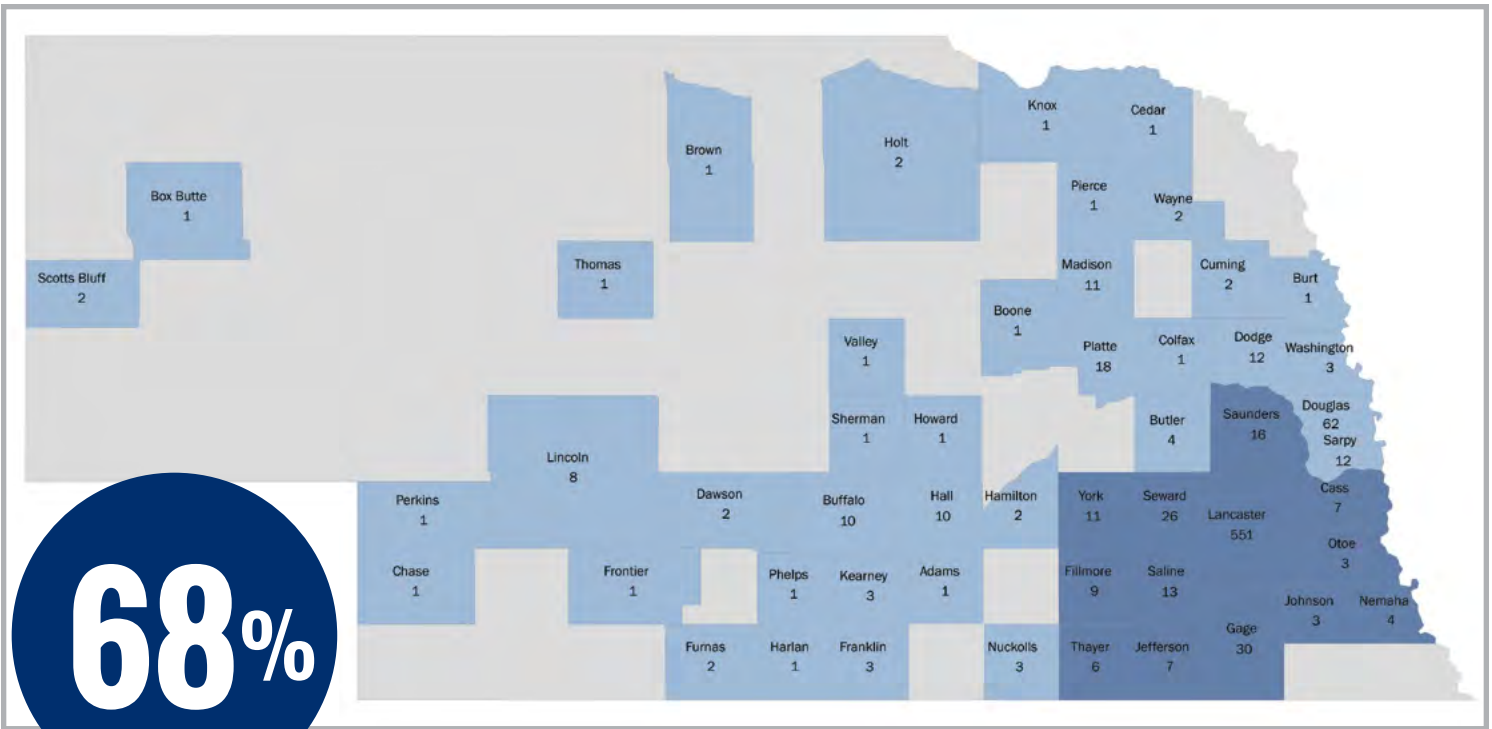
STATE AND REGIONAL IMPACT



87%

of employed graduates are working in Nebraska.

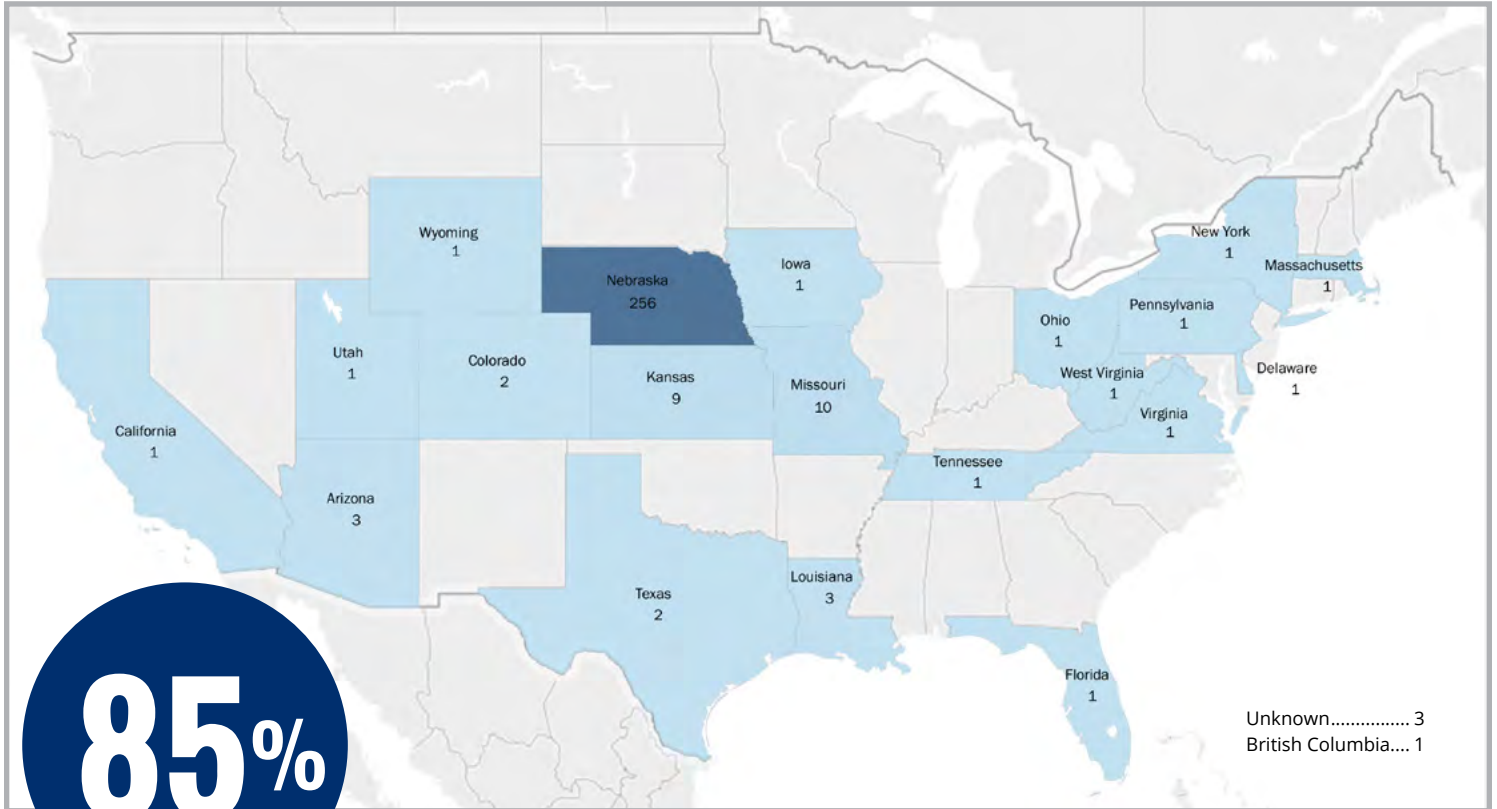
Total employed: 1,011



68%

of employed graduates are working in our 15-county service area.

CONTINUING EDUCATION



85%

of graduates who are continuing their education are doing so in Nebraska. *Total continuing education: 302*

Graduates Continuing Education by Institution

In Nebraska

Bellevue University	NE	19
Bryan College of Health Sciences	NE	5
Chadron State College	NE	1
Doane University	NE	15
Metropolitan Community College	NE	2
Midland University	NE	1
Nebraska Wesleyan University	NE	16
Northeast Community College	NE	2
Peru State College	NE	8
Southeast Community College	NE	72
Union College	NE	3
University of Nebraska Medical Center	NE	8
University of Nebraska Kearney	NE	3
University of Nebraska Lincoln	NE	89
University of Nebraska Omaha	NE	6
Wayne State College	NE	6

Out of state

Berklee College of Music	MA	1
Fort Hays State University	KS	3
Full Sail University	FL	1
Grand Canyon University	AZ	1
Harris-Stowe State College	MO	1
Highland Community College	KS	1
Kansas State University	KS	4
Mercy College Dobbs Ferry	NY	1
National University	CA	1
North Central Kansas Technical College	KS	1
Northwest Missouri State University	MO	8
Ohio State University	OH	1
Red Rocks Community College	CO	2
Tusculum College	TN	1
University of Texas Rio Grande Valley	TX	2
Universal Technical Institute	AZ	2
University of Louisiana, Monroe	LA	3

University of Missouri, St Louis	MO	1
University of Pittsburgh	PA	1
University of Victoria	BC	1
University of Wyoming	WY	1
Virginia State University	VA	1
Weber State University	UT	1
West Virginia Univ Institute of Technology	WV	1
Western Iowa Tech Community College	IA	1
Wilmington University	DE	1



Gathering Data

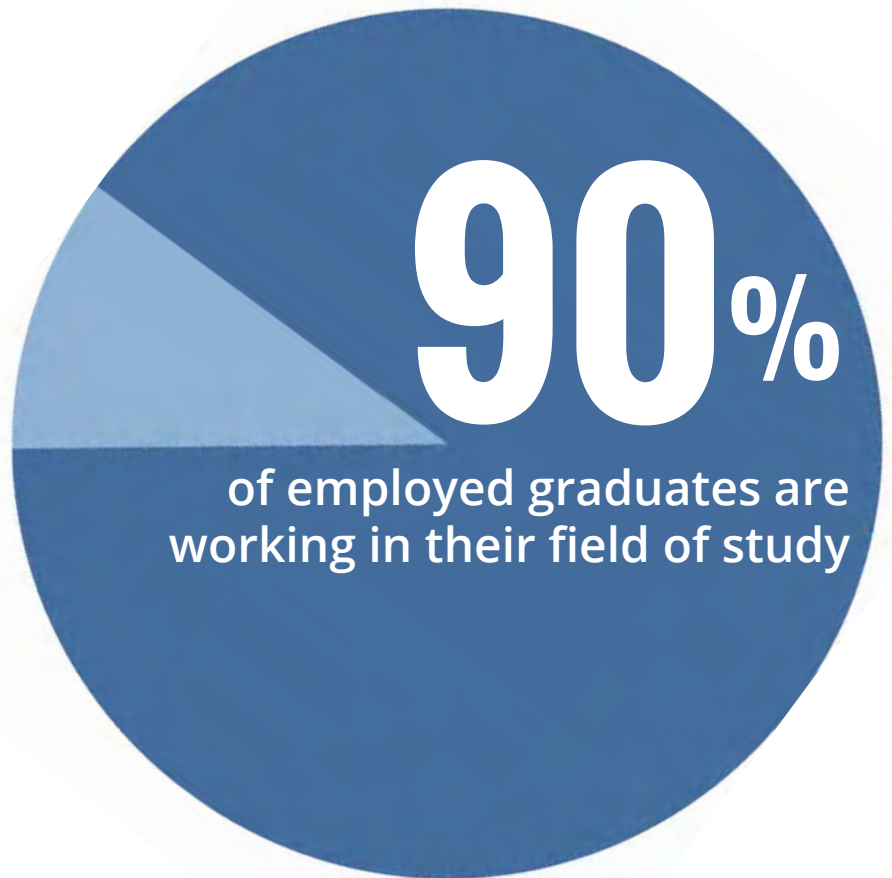
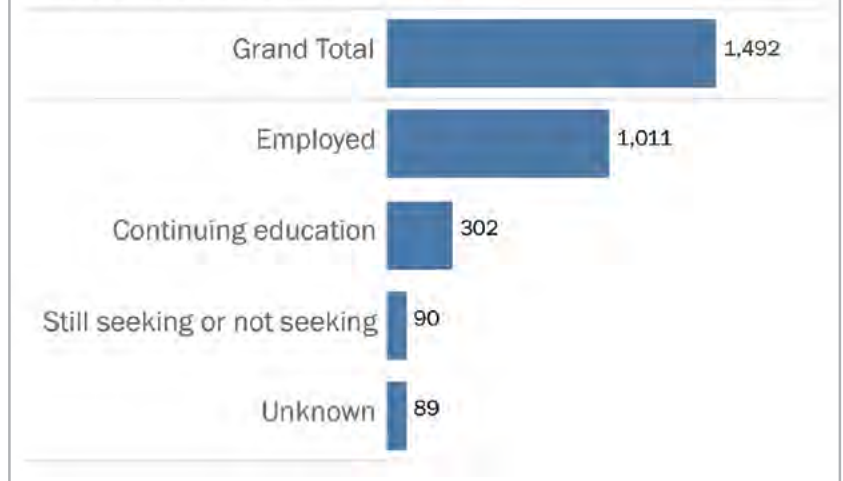
Information about the post-graduation status of SCC graduates was collected directly from the graduates at or near the time of graduation and from the National Student Clearinghouse. The information was collected by the SCC Career Services offices through personal conversations, classroom visits, telephone calls, emails, mailings, texts, and social media.

Wage and employment information has been self-reported by graduates for their first job after graduation. Self-reported continuing education status was supplemented with information from the National Student Clearinghouse.

- **Total graduates during 2018: 1,492**
- **Number of responses: 1,403**
- **Response rate: 94%**



2018 Graduates in Numbers



2018 Programs of Study	Number of graduates	Employed in training-related job	Employed in non-training-related job	Continuing education	Still seeking, Not seeking, No response	Percent working in Nebraska	Average Starting Hourly Salary	Average Starting Annual Salary
Agriculture/Food/Natural Resources								
Agriculture Business & Management Technology	64	31	4	16	13	80%	\$15.85	\$32,968
Culinary/Hospitality	25	15	2	3	5	82%	\$12.50	\$26,000
Dietary Manager	18	14	1	1	2	80%	\$18.85	\$39,208
Horticulture and Turfgrass Management ¹	1	1	0	0	0			
Precision Agriculture ¹	7	0	0	5	2			
Business								
Business Administration	189	115	10	32	32	91%	\$16.15	\$33,592
Office Professional	15	11	1	3	0	92%	\$13.05	\$27,144
Communications & Information Technology								
Computer Information Technology	60	38	10	2	10	96%	\$23.00	\$47,840
Graphic Design Media Arts	8	5	1	1	1	100%	\$14.70	\$30,576
Community Services & Resources								
Criminal Justice	37	11	3	9	14	93%	\$17.70	\$36,816
Early Childhood Education	26	25	0	1	0	96%	\$11.65	\$24,232
Fire and Emergency Services Management ¹	5	4	1	0	0	100%		
Fire Protection Technology ¹	8	3	1	3	1	100%		
Human Services	33	13	8	6	6	76%	\$13.00	\$27,040
Long Term Care Administration ³	15	6	1	5	3	86%	\$24.25	\$50,440
Construction & Electronics								
Building Construction	16	11	2	2	1	100%	\$17.60	\$36,608
Design & Drafting Technology	20	15	0	0	5	100%	\$17.40	\$36,192
Electrical and Electromechanical Technology	57	47	1	4	5	92%	\$21.30	\$44,304
Electronic Systems Technology	22	14	1	1	6	80%	\$17.15	\$35,672
Energy Generation Operations	26	20	1	1	4	86%	\$26.95	\$56,056
Geographic Information Systems Technician	20	15	1	1	3	81%	\$18.50	\$38,480
Heating, Ventilation, Air Conditioning & Refrigeration Technology	19	19	0	0	0	95%	\$16.65	\$34,632
Land Surveying/GIS/Civil Engineering Technology	7	7	0	0	0	100%	\$18.65	\$38,792
Health Sciences								
Associate Degree Nursing	60	48	3	5	4	96%	\$24.60	\$51,168
Dental Assisting	28	26	0	1	1	96%	\$17.00	\$35,360
Medical Assisting	28	17	2	5	4	100%	\$14.75	\$30,680
Medical Laboratory Technology	10	6	0	1	3	83%	\$20.60	\$42,848
Paramedic	13	8	1	3	1	78%	\$20.45	\$42,536
Pharmacy Technician ¹	2	0	1	0	1	0%		
Physical Therapist Assistant ¹	13	7	3	1	2	90%		
Polysomnographic Technology	19	9	5	1	4	36%	\$23.10	\$48,048
Practical Nursing	72	40	4	23	5	100%	\$17.70	\$36,816
Radiologic Technology	23	17	1	0	5	83%	\$18.45	\$38,376
Respiratory Care	17	13	0	1	3	100%	\$19.70	\$40,976
Surgical Technology	39	36	0	1	2	94%	\$18.10	\$37,648
Transportation & Manufacturing								
Auto Collision Repair Technology ²	9	8	1	0	0	89%	\$15.35	\$31,928
Automotive Technology ²	33	24	1	5	3	88%	\$14.30	\$29,744
Deere Construction & Forestry Equipment Tech ²	6	6	0	0	0	33%	\$24.30	\$50,544
Diesel-Ag Equipment Service Tech ²	14	14	0	0	0	100%	\$20.45	\$42,536
Diesel Technology-Truck ²	21	20	0	1	0	100%	\$17.55	\$36,504
Ford Automotive Student Service Educational Training ²	14	14	0	0	0	86%	\$18.15	\$37,752
General Motors Automotive Service Educational Program ²	4	4	0	0	0	75%	\$17.90	\$37,232
John Deere Tech ²	25	25	0	0	0	32%	\$16.50	\$34,320
Manufacturing Engineering Technology	12	10	0	0	2	80%	\$20.15	\$41,912
MOPAR-Chrysler/Dodge/RAM/Jeep College Automotive Program ²	10	10	0	0	0	90%	\$15.55	\$32,344
Motorcycle, ATV & Personal Watercraft Technology ²	12	10	1	0	1	91%	\$12.90	\$26,832
Nondestructive Testing Technology	15	14	0	0	1	57%	\$20.80	\$43,264
Precision Machining and Automation Technology	27	23	1	2	1	79%	\$23.00	\$47,840
Professional Truck Driver Training	45	36	3	0	6	90%	\$21.35	\$44,408
Welding Technology	36	23	6	2	5	86%	\$21.15	\$43,992
Arts and Sciences								
Academic Transfer	187	7	14	154	12	86%		
2018 Totals	1,492	915	96	302	179			

All salaries based on a 40-hour work week unless noted. Salary statistics reflect certificates, diplomas and associate degrees.
The graduates in the "Still Seeking, Not Seeking, No Response" column are not included in the percentage calculations, but includes two graduates who are retired and one who is deceased.

¹ Salaries were not reported for a large enough sample and have been omitted for confidentiality.

² Pay plans and benefits vary to include commissions and bonuses.

³ Must complete 640 hours of a state-specific Administrator-in-Training program.

HIRING COMPANIES

The following pages contain a partial list of companies that hired 2018 SCC graduates, as well as their positions.

AGRICULTURE BUSINESS & MANAGEMENT TECHNOLOGY

COMPANIES

Althouse Ag Inc
Animal Health Center
Bartels Angus
Boyles Ranch
CBS Trucking
DNA Genetics - Fairbury Nucleus
Earl May Seed & Nursery
Farmers Cooperative
Hauder Farms
Jisa's Farmstead
Katz Brothers Trucking
Kolt Cattle Co
Lueking Club Calves
Matt Heidemann Farms
Midwest Farmers Cooperative
Milligan Insurance Agency
North Star Farm
Paplow Harvesting & Trucking
Pillen Family Farms
Plymouth Ag Group LLC
Plymouth Vet Clinic
Pope Farms
Schultis Seed & Consulting
Semler Farms
Siebold Farm
Thayer Family Farms
Tim Sisco Construction
Trauernicht Simmentals
Vaquero Club

POSITIONS

Agronomy Services
Assistant Farm Manager
Barn Manager
Business Consultant
Embryo Assistant/Cattle
Production
Equipment Operator
Farm Assistant
Farmer
Farrowing Tech
Insurance Agent
Owner
Production Technician
Sales/ Field Agronomist
Veterinary Technician
Veterinary Assistant

ASSOCIATE DEGREE NURSING

COMPANIES

Bryan Health
Cheney Psychiatric Associates
CHI Health
Gold Crest Retirement Center
High Plains Alzheimers Special
Care Center
Lakeview Care Center
Laverna Village
Madonna Rehabilitation Hospital
Methodist Health System
Nebraska Heart Institute
Nebraska Internal Medicine
Pioneer Heart Institute
Ridgewood Rehabilitation and
Care Center
Sumner Place
Sunrise Country Manor
Tabitha Health Care Services
Tecumseh Family Health
The Greene Place
Wilber Care Center
York General Health Care
Services

POSITIONS

Charge Nurse
Director of Nursing
MDS Coordinator
Mental Health Nurse
Registered Nurse
RN, Floor
RN, Hospice
RN, Operating Room



AUTO COLLISION REPAIR TECHNOLOGY

COMPANIES

Duncan Aviation
Gerber Collision & Glass
Kaser Blasting & Coatings
Mid-Town Body Shop
Sid Dillon Crete
Speidell Body Works

POSITIONS

Auto Body Technician
Collision Technician
Paint Specialist

AUTOMOTIVE TECHNOLOGY

COMPANIES

Auto Repair Plus
Baldwin's Automotive
Baxter Chrysler Dodge Jeep
Beardmore Chevrolet
Carquest
Duteau Chevrolet
Graham Tire
Harvest Auto & Machinery
Husker Auto Group
inMOTION Auto Care
Lexus of Lincoln
Midas
Midwest Automotive
Muscle Car Concepts
Smith Repair
Syd's Eastside Auto Salvaging
Wagner Tire & Repair
Willard Auto Machine
Woodhouse Auto Family

POSITIONS

Apprentice Technician
Automotive Technician
Machinist
Mechanic
Oil/Lube Technician
Owner
Service Technician

BUILDING CONSTRUCTION TECHNOLOGY

COMPANIES

Brester Construction Inc
Daberkow Wagner Builders Inc
Houlden Remodeling
J-K Custom Carpentry
Kingery Construction Co
KMK Custom Builders
Tru-Built Construction
Whitson Construction

POSITIONS

Carpenter
Laborer





BUSINESS ADMINISTRATION

COMPANIES

Allstate Financial Service
 Ameritas Life Insurance
 Ark Financial
 Assurity Life Insurance Company
 Berry Law Firm
 Brown Immigration Law
 City of Lincoln / Lancaster
 County
 Commercial Investment
 Properties
 Cornhusker Bank
 Crete Carrier Corporation
 Eagle Printing
 Frontier Harley Davidson
 Gallup Inc
 Geist Global
 HCA Healthcare
 Honda of Lincoln
 Lancaster County Department of
 Motor Vehicles
 Lincoln Children's Zoo
 Lockheed Martin
 Midwest Farmer's Co-Op
 Molex Inc
 Nature's Variety
 Pinnacle Bank
 Runza National
 Sandhills Publishing
 Speedway Motors
 Stanley Healthcare Solutions
 State Farm Insurance
 The Clark Enersen Partners
 Union Bank & Trust
 US Federal Government
 Vishay Dale Electronics
 YMCA

POSITIONS

Account Manager
 Accounts Payable Clerk
 Accounts Receivable
 Administrative Assistant
 Branch Manager
 Claims Specialist
 Collections Supervisor
 Compliance Assistant
 Consumer Lending Specialist
 Credit Operations
 Representative
 Crop Insurance Processing
 Specialist
 Customer Service Representative
 Director of Sales
 Field Service Technician
 Front of House Coordinator
 Human Resources Specialist
 Interview Specialist
 Inventory Control Specialist
 Invoice Specialist
 Life Claims Senior Associate
 Loan Processor
 Loss Prevention & Safety
 Coordinator
 Marketing and Promotions
 Manager
 Marketing Assistant
 Mortgage Servicer
 Office Manager
 Quality Control Specialist
 Sales and Leasing Consultant
 Underwriting Analyst
 Worksite & Group Administrator

COMPUTER INFORMATION TECHNOLOGY

COMPANIES

Allo Communications
 Americom Communications
 Corporation
 Arts Incorporated
 Blackburn Technologies
 Bryan Health
 Capital One
 Department of Veterans Affairs
 Digitech Systems
 Duncan Aviation
 Farmers Mutual Insurance of
 Nebraska
 Future Technologies
 Google
 Kidwell
 Nebco
 Nebraska Book Company
 Nebraska Educational
 Telecommunications
 NTT Data Services
 Sandhills Publishing
 Southeast Community College
 State of Nebraska CIO
 Truck Equipment Service
 Company

POSITIONS

Customer Service Representative
 Help Desk Support Specialist
 Information Systems Technician
 IT Applications Developer
 IT Manager
 IT Technician
 IT Technician/Programmer
 Junior Developer
 LAN/WAN Technician
 Network Engineer
 PC Technician
 Process Coordinator
 Software Developer
 Software Engineer
 Support Engineer Technician
 Support Manager
 Telecommunication Technician
 Web Developer

CRIMINAL JUSTICE

COMPANIES

Brennan and Nielsen Law Office
 Cedars Youth Services
 Department of Health and
 Human Services
 Lancaster County Corrections
 Department
 Lincoln Correctional Center
 Lincoln Police Department
 Lutton Law Office
 Nebraska Department of
 Correctional Services
 Otoe County Sheriff's Office
 University of Nebraska-Lincoln

POSITIONS

Community Service Officer
 Corporal
 Correctional Case Worker
 Corrections Officer
 File Clerk
 Paralegal
 Public Safety Dispatcher
 Social Worker
 Youth Specialist

CULINARY/ HOSPITALITY

COMPANIES

9 South CharGrill
 Brown County Hospital
 Charleston's Restaurant
 Cherry On Top
 Company Kitchen
 Cravin Fresh Catering
 Don's Bar
 Fireworks Restaurant
 HyVee
 Immanuel Senior Living
 Le Quartier Baking Company
 Mode de Vie
 Russ's Market
 Sioux City Country Club
 Source. Eat Fit



POSITIONS

Baker
 Cake Decorator
 Cook
 Dietary Cook
 Line Cook
 Pastry Chef
 Sous Chef

DEERE CONSTRUCTION & FORESTRY EQUIPMENT TECH

COMPANIES

Murphy Tractor & Equipment Co

POSITIONS

Construction Equipment
 Technician at a Deere
 construction and forestry
 equipment dealership

DENTAL ASSISTING

COMPANIES

All Smiles Dentistry
 Bluestem Health
 Children's Dentistry of Lincoln
 Edgewood Dental Group
 Family 1st Dental of Hickman
 Family & Implant Dentistry
 Gleason Dental Clinic
 Joint Base Elmendorf -
 Richardson
 Lincoln Orthopaedic Center
 Lincoln Pediatric Dentistry
 Martin Lacey Antholz Dentists
 Nebraska Oral and Facial
 Surgery
 Optimal Dental
 Pioneer Greens Dentistry
 Reichert Family Dentistry
 Smile Specialties
 Steckelberg Dental
 UNMC College of Dentistry
 Vacek Family Dentistry
 Wilderness Station Pediatric
 Dentistry

POSITIONS

Certified Dental Assistant
 Head Dental Assistant
 Orthodontic Assistant



DESIGN & DRAFTING TECHNOLOGY

COMPANIES

Advanced Technical Services
 Capitol City Electric
 DLR Group
 JEO Consulting
 Nucor Corporation
 Olsson Associates
 Specialized Engineering Solutions
 Speece Lewis Engineers
 Structural Component Systems Inc
 TMC0
 VirtuActive 3D Drafting & Design

POSITIONS

Architectural Drafter
 Assistant CAD Technician
 Bridge Detailer
 CAD Designer
 CAD Designer/Programmer
 CAD Technician
 Detailer/Drafter
 Drafter

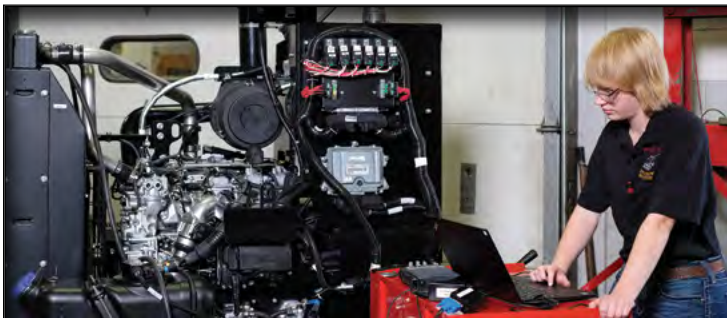
DIESEL-AG EQUIPMENT SERVICE TECH

COMPANIES

Benes Service Co
 Butler Ag Equipment
 Curlo Hay Grinding
 Double Z Express
 Fremont Beef Co
 Keim Farm
 Landmark Implement
 Nebraska Equipment Inc
 Steffview Dairy
 Tracy's Road Wrench

POSITIONS

Diesel Technician
 Manager
 Mechanic
 Service Technician



DIESEL TECHNOLOGY-TRUCK

COMPANIES

Automotive Specialties
 Crete Carrier Corp
 Cross & Sons Inc
 Dual Inc
 Floyd's Truck Center
 Fremont Contract Carriers
 J & J Diesel Service Inc
 MHC Kenworth Lincoln
 Nebraska Department of Transportation
 P & R Sales
 RDO Truck Center
 Sahling Kenworth Inc
 Schlegel Automotive
 Seward Motor Freight Inc
 Truck Center Companies
 Wicks Sterling Trucks

POSITIONS

Diesel Technician
 Mechanic
 Surface Maintenance Technician

DIETARY MANAGER

COMPANIES

Brookdale Senior Living
 Central Nebraska Veterans Home
 Clarkson Care & Rehabilitation Center
 Crestview Care Center
 Gateway Vista
 Good Samaritan-Syracuse
 Havelock Manor
 Hemingford Community Care Center
 Heritage Crossings
 Linden Court
 Mount Washington Care Center
 Old Cheney Rehabilitation
 Park Lane Nursing Home
 Senior Village Nursing Home

POSITIONS

Activity Director
 Administrator
 Certified Dietary Manager
 Dietary Supervisor
 Dining Services Coordinator
 Dining Supervisor
 Director of Food and Nutrition
 Food Service Director
 Production Manager

EARLY CHILDHOOD EDUCATION

COMPANIES

Amanda's Place Childcare
 Bright Futures Child Care
 Bryan Health
 Bubbles & Blocks Child Development Center
 Community Action of Nebraska
 Head Start
 Inspiring Minds
 Ivy League Child Development
 Lincoln Children's Museum
 Loving Hearts Child Development Center
 Rosemont Preschool and Day Care
 Southeast Community College
 The Hearth Academy Preschool
 Touching Hearts Early Childcare Center
 West Central Community Action
 York General Child Care
 Young Voices Child Development Center

POSITIONS

Assistant Teacher
 Child Care Assistant
 Child Care Outreach
 Daycare Provider/Owner
 Head Infant Teacher
 Headstart Teacher
 Infant Specialist
 Lead Teacher
 Preschool Assistant Teacher
 Preschool Lead Teacher
 Preschool Teacher
 Toddler Lead Teacher

ELECTRICAL & ELECTROMECHANICAL TECHNOLOGY

COMPANIES

A & R Electric
 Accent Controls
 Altec Industries
 BD
 Brase Electrical Contracting
 Bryant Air Conditioning & Heating Co
 Custom Electric
 Day & Zimmermann
 DNB Electrical
 Fremont Electric Inc
 Gordon Electric
 Harold K Scholz & Co
 Hartig Electric
 Hillaero Modification Center
 IES Commercial Inc
 JK Electric
 Kawasaki Motors Manufacturing Corp
 Li-Cor Biosciences
 Molex Inc
 NEAPCO
 Progressive Electric Inc
 Schneider Electric
 Shanahan Mechanical & Electrical Inc



Shelley's Electric
 Smart Chicken
 Tenneco
 Veyance Technologies
 Vishay Dale Electronics
 Wells Dairy
 Willmar Electric Service
 Woolsey Electric

POSITIONS

Apprentice Electrician
 Assistant Electrician
 Automation Engineering Technician
 Controls Technician
 Electrical Technician
 Electromechanical Technician
 Engineering Technician
 Freezer Maintenance Technician
 Interior Wire Installer
 Maintenance Technician
 Robotics Technician
 Substation Technician

ELECTRONIC SYSTEMS TECHNOLOGY

COMPANIES

Communication Systems Solutions
 Duncan Aviation
 Electronic Contracting Company
 Engineered Controls Inc
 Exmark Manufacturing
 Garmin
 JA Woollam
 Lutron Electronics
 NEO Tech
 Signetik
 Teledyne ISCO

POSITIONS

Apprentice Install Electrician
 Avionics Bench Technician
 Electrical Test Technician
 Electronic Assembler
 Electronic Technician
 Five DX Operator
 Install Technician
 Service Engineer

ENERGY GENERATION OPERATIONS

COMPANIES

ADM
Alten
Carolina Precision Switchgear
ComEd
Flint Hills Resources
Fortigen Geneva
Hastings Utilities
Hexagon
Mid American Energy Co
Nebraska Public Power District
Pellet Technology

POSITIONS

Apprentice Operator
Coal Plant Auxiliary Operator
Distribution Operator
Operator
Technician

FIRE AND EMERGENCY SERVICES MANAGEMENT

COMPANIES

Ashland Fire Department
Lincoln Fire & Rescue
Midwest Medical Transport

POSITIONS

Emergency Medical Technician
Firefighter
Lieutenant/Training

FIRE PROTECTION TECHNOLOGY

COMPANIES

Bellevue Fire and Rescue
General Fire & Safety Equipment Company
Nebraska Air Guard Fire Department

POSITIONS

Field Technician
Firefighter

FORD AUTOMOTIVE STUDENT SERVICE EDUCATIONAL TRAINING

COMPANIES

Baxter Ford West Dodge
Friesen Ford
Gene Steffy Ford
Scott Peterson Motors
Sid Dillon
Tri State Ford Lincoln
Woodhouse Ford

POSITIONS

Automotive Technician at a Ford dealership

GENERAL MOTORS AUTOMOTIVE SERVICE EDUCATIONAL PROGRAM

COMPANIES

Gregg Young Chevrolet Inc
Husker Auto Group
Tom Dinsdale Chevrolet
Vern Eide Chevy Buick GMC

POSITIONS

Automotive Technician at a GM dealership

GEOGRAPHIC INFORMATION SYSTEMS TECHNICIAN

COMPANIES

Allied Surveying & Mapping
Alpha Land Surveying
Associated Engineering Inc
Beehive Industries
City of Gering
City of Lincoln / Lancaster County
E & A Consulting Group
gWorks
Husker Surveying
Modis
Nebraska Department of Roads
Rega Engineering
Rocky Mountain Survey
Smallmelo GIS

POSITIONS

CADD Technician
Drafter/GIS Technician
GIS Technician
Highway Environmental Biologist
Land Platting Technician
Land Surveyor
Survey Technician

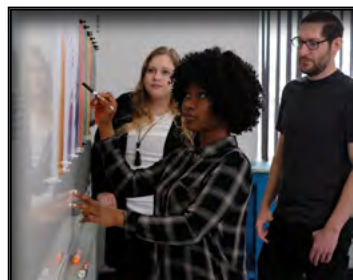
GRAPHIC DESIGN | MEDIA ARTS

COMPANIES

Austin Showtime Design
Concordia University
Home Services of Nebraska
The UPS Store
Turnpost Creative Group

POSITIONS

Freelance Graphic Designer
Graphic Designer
Office Designer



HEATING, VENTILATION, AC & REFRIGERATION TECHNOLOGY

COMPANIES

A-1 Refrigeration
Absolute Comfort Heating & Air
Bryant Air Conditioning & Heating Co
Capitol Heating & Air Conditioning
Comfort Techs
Grunwald Mechanical Contractors
Jones Plumbing & Heating
Krauter Bosn Service Co
Lee's Refrigeration
Mechanical Sales Parts Inc
National Furnace and AC
Noakes Refrigeration
Pure Comfort Heating & Air
Service Experts Heating & Air
Standard Heating and Air
Tech Masters
Vision Mechanical

POSITIONS

HVAC Technician
Service Technician

HORTICULTURE AND TURFGRASS MANAGEMENT

COMPANIES

Sabetha Golf Club

POSITIONS

Greenskeeper

HUMAN SERVICES

COMPANIES

Cedars Youth Services
Child Guidance Center
Fresh Start Home
Lincoln Children's Museum
Lutheran Family Services
Nebraska Department of Correctional Services
Region V Services
The Bridge Behavioral Health

POSITIONS

Case Manager
Chemical Dependency Counselor
Child Specialist
Community Support Professional
Network Quality Consultant
Professional Partner
Recovery Advocate
Support Specialist
Team Activity Leader
Youth Services Specialist

JOHN DEERE TECH

COMPANIES

21st Century Equipment
Ag-Power
Agrivision Equipment
Concordia Tractor Inc
Greenline Equipment
Grossenburg Implement
Heritage Tractor Inc
Hiawatha Implement Co
Horizon Equipment
Northwest Implement
Noteboom Implement
Plains Equipment Group
Platte Valley Equipment Co
Todd Tractor Co
Van Wall Equipment

POSITIONS

Agricultural Management Solutions (AMS, GPS) at a John Deere dealership
Agriculture Equipment Technician at a John Deere agricultural dealership

LAND SURVEYING/GIS/ CIVIL ENGINEERING TECHNOLOGY

COMPANIES

Allied Surveying & Mapping
Alpha Land Surveying
Associated Engineering Inc
E & A Consulting Group Inc
Husker Surveying
Rega Engineering

POSITIONS

CADD Technician
Land Platting Technician
Land Surveyor
Survey Technician



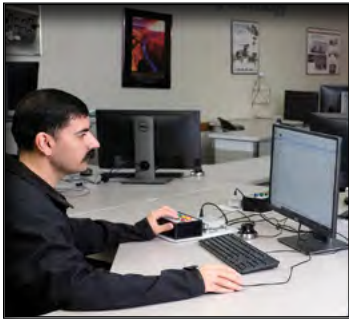
LONG TERM CARE ADMINISTRATION

COMPANIES

Ashton Medical Lodge
Oakland Heights
Old Mill Rehabilitation
Prairie Village Retirement Center
Ridgewood Rehabilitation and Care Center
Willow Brook Assisted Living

POSITIONS

Administrator
Certified Dietary Manager
Receptionist
Social Service Coordinator



MANUFACTURING ENGINEERING TECHNOLOGY

COMPANIES

Cleaver-Brooks
Garner Industries
Hexagon
Kohler Industries Inc
Mead Industries
Norfolk Iron & Metal Co
Schenck Process LLC
Sioux City Foundry Co
TMCO
Tri-V Tool & Mfg

POSITIONS

Design Engineer
Engineering Technician
Manufacturing Technician
Production Engineer
Technician

MEDICAL ASSISTING

COMPANIES

Autumn Ridge Family Medicine
Bryan Health
Doctors of Women
Fillmore County Medical Center
Lincoln Family Medical Group
Lincoln Family Wellness
Lincoln Pediatric Group
Nebraska Medicine
Nebraska Pulmonary Specialties
Nebraska Urban Indian Medical
Center
North Lincoln Family Medical
Center
Primary Care Partners
Real Life Health
Sutton Dermatology &
Aesthetics

POSITIONS

Certified Medical Assistant
Dermatology Assistant

MEDICAL LABORATORY TECHNOLOGY

COMPANIES

Bryan Health
Harlan County Health System
Mercy Health Hospital
Nebraska Hematology Oncology
Physicians Laboratory Services

POSITIONS

Medical Laboratory Generalist
Medical Laboratory Technician

MOPAR-CHRYSLER/ DODGE/RAM/JEEP COLLEGE AUTOMOTIVE PROGRAM

COMPANIES

Baxter Chrysler Dodge Jeep
Herpolsheimers Inc
Iverson Chrysler
Janssen Chrysler Jeep Dodge
Ram of Holdrege
Midway Auto Dealerships
Platte Valley Auto Mart
Sid Dillon Crete

POSITIONS

Automotive Technician at a
Chrysler dealership

MOTORCYCLE, ATV & PERSONAL WATERCRAFT TECHNOLOGY

COMPANIES

Dillon Brothers Harley Davidson
Dillon Brothers Motorsports
Frontier Harley Davidson
HVC Cycle
Koranda Motorsports
Star City Motor Sports Inc
Wayne's Body Shop

POSITIONS

Detailer
Service Technician
Shop Support
Technician

NONDESTRUCTIVE TESTING TECHNOLOGY

COMPANIES

ATI Ladish
Collins Aerospace
DBI Inc
General Dynamics
Lockheed Martin
Olsson
Phoenix National Laboratories
Wellman Dynamics
Xcel NDT

POSITIONS

Assistant Radiographer
Mechanical Integrity Inspector
NDT Inspector
NDT Technician
UT Assistant

OFFICE PROFESSIONAL

COMPANIES

Bluestem Fiber
Capital One
Christian Heritage Children's
Home
Great Western Bank
Jantzen Law Office
Lincoln Federal Savings Bank
Nelnet
Perkins County Veterinary
Hospital
Prairie Fields Family Medicine
Q P Ace Hardware
Wealth Partners

POSITIONS

Administrative Assistant
Clinical Secretary
Compliance Administrator
Customer Service Coordinator
Front Office Assistant
Merchandiser
Mortgage Loan Processor
Paralegal
Representative II
Service Assistant
Teller

PARAMEDIC

COMPANIES

Johnson County Med-Act
Leavenworth County
Medics At Home
Midwest Medical Transport
Nine Line Medical Solutions
South Central EMS

POSITIONS

Emergency Medical Technician
Paramedic

PHYSICAL THERAPIST ASSISTANT

COMPANIES

Complete Physical Therapy
Crist & Pieschl Physical Therapy
Encore Rehabilitation
Interim Health Care
Legacy Retirement Communities
Lincoln Orthopaedic Center

POSITIONS

Physical Therapist Assistant

POLYSOMNOGRAPHIC TECHNOLOGY

COMPANIES

Bryan Health
CHI Health
Children's Hospital & Medical
Center
Lung Allergy and Sleep Center
Marshfield Clinic
Nebraska Medical Mart
Riverside Urology Specialists
The Valley Hospital Center for
Sleep Medicine

POSITIONS

Polysomnographic Technician
Respiratory Therapist
Sleep Technician

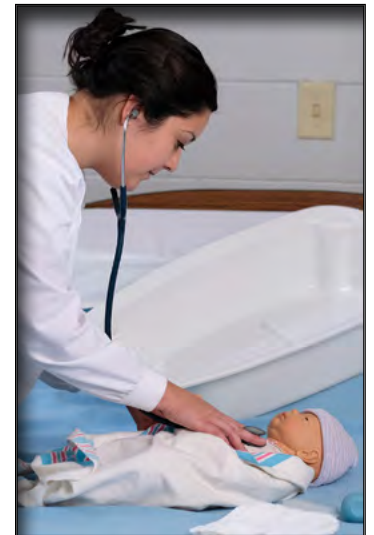
PRACTICAL NURSING

COMPANIES

Alivation Health
Beatrice Community Hospital
Beatrice Health & Rehabilitation
Belle Terrace
Bryan Health
Capital Care Staffing
Columbus Community Hospital
Company Care
Elite Professionals Home Care
Fremont Health - Dunklau
Gardens
Fresenius Kidney Care
Friend Community Healthcare
System
Gardenside Long-Term Care
Good Samaritan Society
Grifols Biomat Plasma Center
Interim Healthcare
Legacy Retirement Communities
Lincoln Family Medical Group
Madonna Rehabilitation Hospital
Maxim Healthcare Services
Memorial Community Health
Nebraska Community Blood
Bank
Nebraska Department of
Correctional Services
Pediatrics PC
Pine Lake Health
Ridgewood Rehabilitation and
Care Center
Saunders County Medical Center
South Haven Living Center
Southlake Village Rehabilitation
and Care Center
Tabitha Health Care Services

POSITIONS

Licensed Practical Nurse
LPN, Charge Nurse
LPN, Collection Nurse
Youth Mental Health Nurse



PRECISION MACHINING AND AUTOMATION TECHNOLOGY

COMPANIES

BD
Conductix-Wampfler
Eagle Precision Machine
Garner Industries
Grayson Tool Co
Heartland Technologies
Honeywell
IntoMetal Inc
Lincoln Machine Inc
Linden Mold & Tool
Metal Works Unlimited
Metalquest Unlimited
Molex Inc
R-Tech Tool & Machine
Speedway Motors
Tenneco
Tri-V Tool & Mfg

POSITIONS

CNC Machinist
CNC Operator/Machinist
Machinist
Mold Maintenance Technician
Mold Technician
Tool Maker



PROFESSIONAL TRUCK DRIVER TRAINING

COMPANIES

ABC Supply
Arrow Towing
Crete Carrier Corporation
Decker Truck Line
Distribution Incorporated
Dot Transportation
Fremont Contract Carriers
Gana Trucking & Excavating
Grand Island Express
Hogan Transportation
ILC Resources
K & Z Distributing
Keim TS
Mercer Transportation
MidCon Underground
Construction
Schneider National
Sysco Lincoln
TBrock
TSL Companies
Werner Trucking Enterprises

POSITIONS

Over-The-Road Truck Driver
Regional Driver
Tow Truck Driver

RADIOLOGIC TECHNOLOGY

COMPANIES

Bryan Health
Children's Hospital & Medical Center
Community Memorial Healthcare
Concentra Urgent Care
Faith Regional Health Services
IU Health Paoli Hospital
MedExpress Urgent Care
Sanford Health
Twin Rivers Urgent Care
Urgent Care Clinic of Lincoln

POSITIONS

Medical Support Specialist
Radiologic Technologist

RESPIRATORY CARE

COMPANIES

Avera St Anthony's Hospital
Bryan Health
CHI Health
CHI Health Bergan Mercy
Medical Center
Nebraska Medicine
Tri Valley Health System

POSITIONS

Respiratory Therapist

SURGICAL TECHNOLOGY

COMPANIES

Avera McKennan Hospital
Bryan Health
CHI Health
CHI Health Good Samaritan
CHI Health Nebraska Heart
CHI Health St Francis
Columbus Community Hospital
Crete Area Medical Center
Faith Regional Health Services
Great Plains Health
Heartland Surgery Center
Kearney Regional Medical Center
Lincoln Surgical Hospital
Mayo Clinic
Nebraska Surgery Center
Southwest Surgery Center

POSITIONS

Certified Surgical Technologist
Labor and Delivery Surgical Technologist

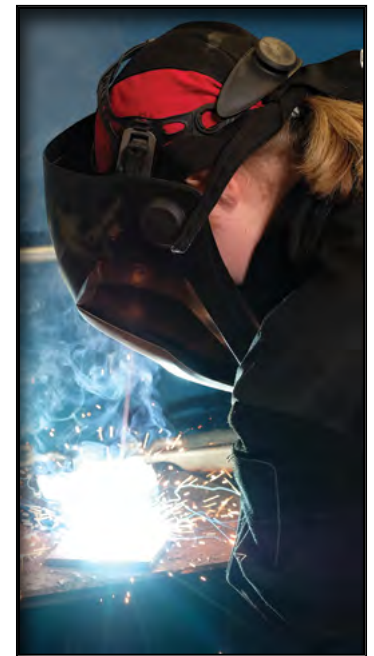
WELDING TECHNOLOGY

COMPANIES

Bison Inc
BNSF Railway
Cleaver-Brooks
Eagle Motorsports
Horizontal Boring & Tunneling
IntoMetal Inc
Kawasaki Motors Manufacturing Corp
Quality Fabrication and Steel
S & S Welding
Speedway Motors
TMCO
Valmont Industries
Wendling Quarries

POSITIONS

Pipefitter/Sheetmetal Worker
Track Laborer
Welder



SCC Changing Academic Calendar to Semesters



Beginning **August 2019**, SCC will operate on the semester calendar system. The transition from quarters to semesters has been studied at length during the past three years by representatives from nearly every area of the College.

SCC received preliminary results from the Higher Learning Commission visiting team in Fall 2016. The conversion to a semester calendar was one of several major initiatives that was validated by the report as critical to meeting the HLC's core criteria.

A Calendar Task Force was formed, and it met for the first time in August 2017, working on multiple plans to steer the College through this process. Here is a brief update on the College's quarter-to-semester calendar conversion:

A link on the public website (www.southeast.edu/Q2S) contains comprehensive up-to-date information, including the calendars, timeline, a student guide, a Q&A section, and more.

Members of the Calendar Task Force have refined the calendars, drafted a common class schedule, developed an implementation timeline, and contacted other schools to gather best practices. All of this information is being shared with SCC employees, students and the general public.

Calendar Task Force Members: Dr. Dennis Headrick (co-leader), Bev Cummins (co-leader), Marcie DeLong, Dr. Bruce Exstrom, Rod Rhodes, Mike Pegram, Al Brunkow, Shawna Herwick, Robin Moore, and Stu Osterthun.

SCC is in a transformational period guided by its Strategic Plan. One of these transformative phases involves increasing the College's capacity to produce a skilled workforce and to ensure students have affordable access to higher education.

Projects illustrated on these two pages reflect SCC's commitment to growing enrollment and therefore graduating more students to enter the workforce.

www.southeast.edu/facilities

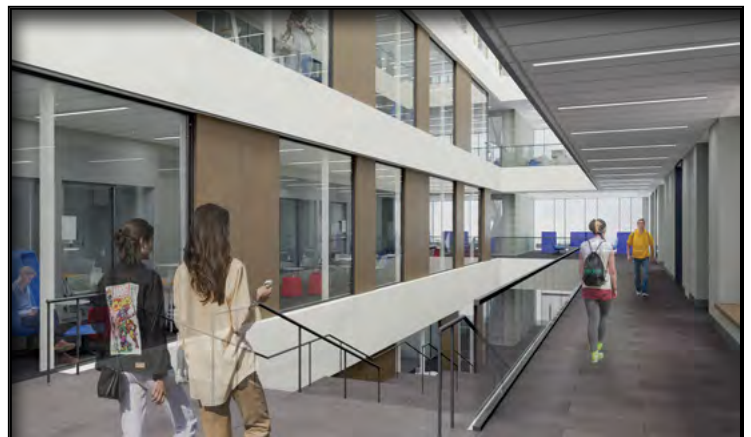
Residence Hall

Beatrice Campus



Health Science Building

Lincoln Campus



Diesel Technology & Welding Center

Milford Campus

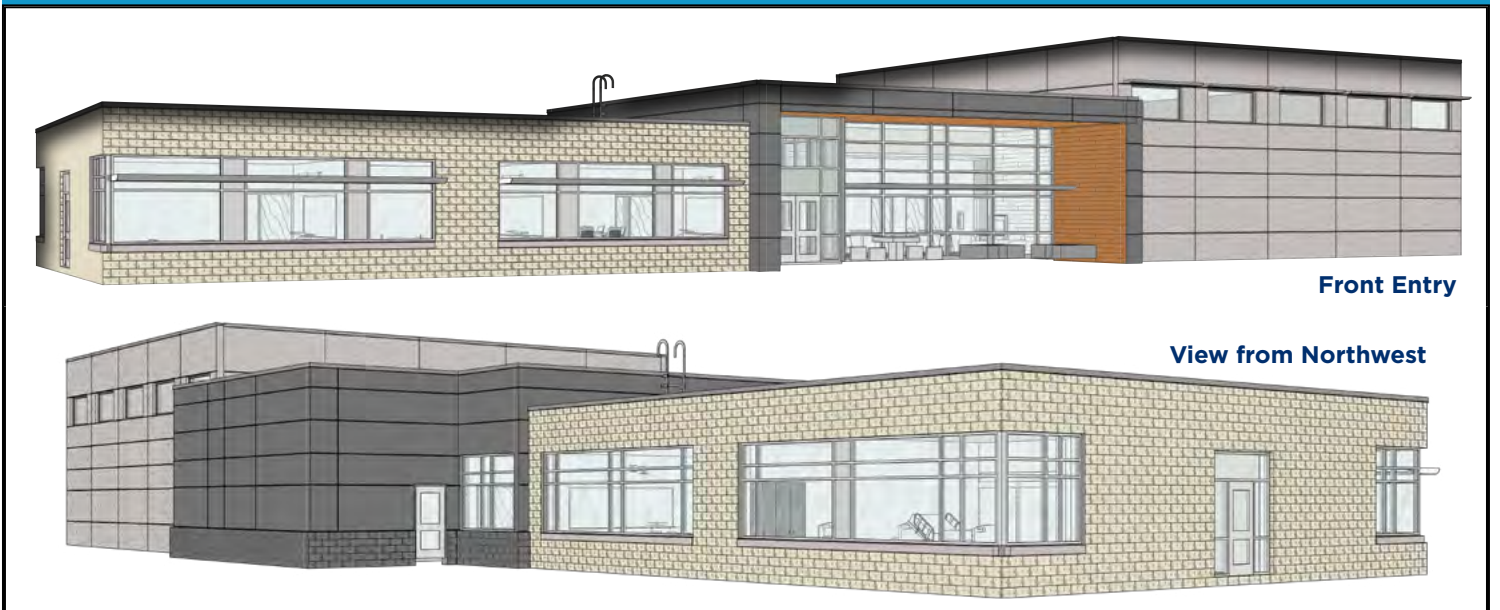


Residence Hall

Milford Campus



Learning Center at Falls City



Front Entry

View from Northwest



www.collegecentral.com/southeast



Career Services offers the following for SCC students, graduates and employers:

JobConnect Employment Website
On-Campus Interviews/Résumé Development
Career Workshops/Etiquette Dinners
Lifetime Career Services Assistance
Career Fairs

Beatrice Campus

4771 W. Scott Road
Beatrice, NE 68310-7042
800-233-5027 Ext. 1216 or 1252
FAX: 402-228-2218

Connie Russell

Career Services Specialist
402-228-8216
crussell1@southeast.edu

Amber Moody

Administrative Assistant
402-228-8252
amoody@southeast.edu

Lincoln Campus

8800 O St.
Lincoln, NE 68520-1299
800-642-4075 Ext. 2622/2632/2621
FAX: 402-437-2593

Heather Waite

Career Services Specialist
402-437-2622
hwaite@southeast.edu

Sabrina Schinstock

Administrative Assistant
402-437-2632
sschinstock@southeast.edu

Milford Campus

600 State St.
Milford, NE 68405-8498
800-933-7223 Ext. 8242 or 8233
FAX: 402-761-8439

Shelly Tolle

Career Services Specialist
402-761-8242
stolle@southeast.edu

Marcia VanAndel

Administrative Assistant
402-761-8233
mvanandel@southeast.edu

Board of Governors

Chairperson: Nancy A. Seim, Lincoln; Vice Chairperson: Robert J. Feit, Lincoln; Secretary: Kathy Boellstorff, Johnson; Treasurer: Dale Kruse, Beatrice; James J. Garver, Lincoln; Keith Hammons, Weeping Water; Steven Ottmann, Dorchester; Edward C. Price, Lincoln; Lynn Schluckebier, Seward; Ellen Weissinger, Lincoln; Kristin Yates, Lincoln; Linda Hartman, Faculty Representative, Lincoln (Jan. 2019)

SCC is an equal opportunity educator and employer. SCC es un patrono con Igualdad de Oportunidades en el Empleo y la Educación.
www.southeast.edu/diversity A0014 (03/19)