

Personality + Career



SCC Automotive Technology students have mechanical ability and basic math skills, are analytical thinkers, and are committed to a task until the job is done. They enjoy working independently and as part of a team. Automotive students are also organized and have good communication skills.

Program	Credential	What do students learn in the program?	What you'll earn! (Based on SCC Graduate Report)	Career Opportunities	Certification Preparation*	Required Tools, Supplies, and Uniforms
Automotive Technology and Light Repair	Certificate	Students learn to perform basic maintenance repair, including oil changes, battery maintenance, filter, and fluid inspection and replacement, and tire rotation, installation, and replacement, often in quick service locations.	New credential. No graduate salary available.	Maintenance Repair technician	ASE G1 Maintenance and Light Repair – 1 year of experience required.	Tools are required. See outlined information. A uniform shirt is required and is sold in the Campus Store.
Automotive Technology	Diploma	In addition to the skills noted above, students learn to complete suspension, steering, brake, alignment, and heating and air conditioning work. Graduates are ready to safely work in repair shops.	New credential. No graduate salary available.	Journeyman technician	ASE A4, A5, A6, and A7 Steering and suspension, brakes, electrical and electronic systems, and heating and air conditioning.	Tools are required. See outlined information. A uniform shirt is required and is sold in the Campus Store.
Automotive Technology	Associate of Applied Science	In addition to the skills listed above, students learn transmission and engine repair and how to optimize engine performance (fuel and ignition systems, computer engine control systems, etc.). Graduates have many opportunities within the automotive industry, including becoming a general manager, an automotive technician and more! A.A.S. graduates have Master-level training.	\$16.50 per hour; \$34,320 annually	Master-level technician	ASE A1, A2, A3, and A8 Engine repair, automatic transmission, manual drive train and axles, and engine performance. Our ASE accreditation provides one year of the required two years of work experience needed to earn ASE certification.	Tools are required. See outlined information. A uniform shirt is required and is sold in the Campus Store.

*The program prepares students for ASE certification, however, students are not required to take certification tests as part of the program. The skills listed in the column above reflect/represent the skills training required for those test areas.

» Your Next Steps to Choose SCC

- ▶ Schedule a Campus Visit - southeast.edu/visit
- ▶ Explore career options with an Admissions Counselor - southeast.edu/admissionsadvising
- ▶ Apply - southeast.edu/applynow

» Paying for SCC

- ▶ Free Application for Federal Student Aid (FAFSA) - studentaid.gov/h/apply-for-aid/fafsa
- ▶ Scholarships - southeast.edu/scholarships
- ▶ Payment Plan - mycollegepaymentplan.com/southeast
- ▶ Veteran Education Benefits - southeast.edu/veterans-services
- ▶ GAP Assistance Program - southeast.edu/gap
- ▶ Children of State Teammate Tuition Reimbursement Program - southeast.edu/children-of-state-teammate-tuition-reimbursement-program



Scan this code to access the course listing

Contact Admissions to get started!

402-437-2600, 800-642-4075 ext. 2600

✉ admissions@southeast.edu



Skilled auto technicians are in demand, and we want to prepare you for a rewarding career in the high-tech auto industry. Our Automotive Technology program provides intensive, hands-on training using state-of-the-art equipment in the areas of engine repair, automatic transmission and transaxle, manual drive train and axles, suspension and steering, brakes, electrical/electronic systems, heating and air conditioning, and engine performance. The automotive industry has endless opportunities at any location.



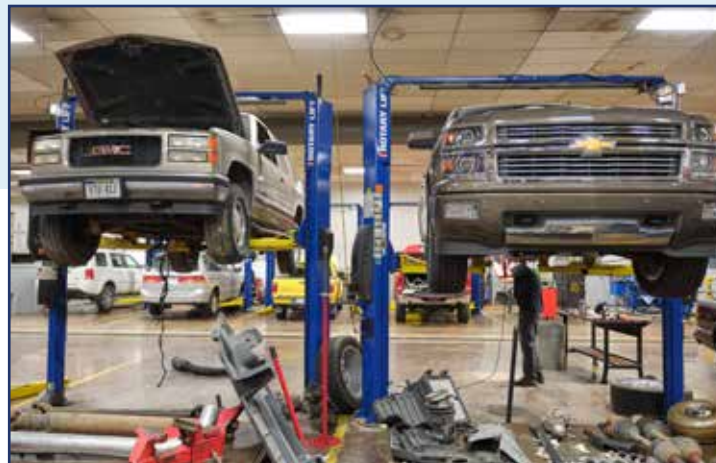
This program is accredited by the ASE Education Foundation, 1503 Edwards Ferry R., NE, Ste. 401, Leesburg, VA 20176, 703-669-6650, aseeducationfoundation.org

Program Contact Information

Barry Smith, Program Director
402-437-2643, (800) 642-4075 ext. 2643
✉ bsmith@southeast.edu

The SCC Experience

- » SCC's Automotive Technology program is committed to connecting students with live vehicle repair projects in the lab. Students learn in an environment that reflects current industry standards. Working on real car repairs (including your own vehicles) prepares our graduates to transition into the workplace exceptionally well.
- » All SCC Automotive Technology instructors are ASE Master-Level Certified. This is above the industry standard - SCC goes above and beyond to ensure that students learn from the best faculty available.
- » SCC works with an exceptional list of industry partners who provide SCC with cutting-edge tools and equipment, allowing students to learn with the best and most advanced technologies available.
- » You will get significant hands-on experience! Automotive Technology students spend 75% of their time in the lab and 25% in the classroom.



Program	Credential	Location	Credit Hours	Tuition/ Fees*	Books/ Fees/ Supplies	Tools	Total Cost*	Starting Term(s)	Number of Semesters Required to Complete at Full Time Status	Is there a Part-Time Option?	Number of Semesters Required to Complete at PT Status?	Typical Class Schedule**
Automotive Technology and Light Repair	Certificate	Lincoln and Milford	12	R - \$1,452 NR - \$1,704	\$360	\$800	R - \$2,612 NR - \$2,864	Fall and Spring	1	Students attend classes 2-3 days a week, depending on the term.	2	Classes are scheduled Monday - Thursday, 8 a.m.-4 p.m., and Fridays, 8 a.m.-Noon
Automotive Technology	Diploma	Lincoln and Milford	31	R - \$3,751 NR - \$4,402	\$460	\$3,800	R - \$8,011 NR - \$8,662	Fall and Spring	2	Students attend classes 2-3 days a week, depending on the term.	4	Monday - Thursday, 8 a.m.-4 p.m., and Fridays, 8 a.m.-Noon
Automotive Technology	Associate of Applied Science	Lincoln and Milford	65	R - \$7,865 NR - \$9,230	\$760	\$6,050	R - \$14,675 NR - \$16,040	Fall and Spring	4	Students attend classes 2-3 days a week, depending on the term.	8	Monday - Thursday, 8 a.m.-4 p.m., and Fridays, 8 a.m.-Noon

*R=Resident, NR=Non-resident. Costs listed are estimates and are subject to change based on the market price of books, supplies, tools, uniforms, etc. Estimated costs also include tuition and fees. Additionally, days/times of week for class, lab, clinical/practicum are subject to change based on curriculum, facilities, instructor, and site availability. Actual program schedules will be provided prior to each enrolled term.

**Varies based on the selected courses. Full-time schedules are 8 a.m.-4 p.m. five days a week for first-year students. This includes Certificate, Diploma and A.A.S. Four days a week M-Th for second-year students (A.A.S. only). Part-time options with two- or three-day-a-week schedules are available in Lincoln.

No summer term is required for full- or part-time students. AUTT program classes must be taken in person.

TOOLS

Many tools are provided and students are only asked to purchase minimum tools in their first term, giving them time to explore and learn. Students then add to tools in future semesters. Tools are an investment in a student's career and SCC works with a variety of tool vendors to give students options. Many vendors offer students a significant discount. Students can also purchase tools from other vendors not associated with the College. Program faculty and advisors will provide students with specific information related to tools prior to the start of their first semester.

During the first week of each semester, tool vendors come to campus and provide students with options to buy single tools or tool sets based on program needs. Faculty will be available to help students make selections based on course and program needs.

Automotive Technology - Ford - General Motors - Required Basic Tool List

The following tool list includes the basic tools a student will be required to have to successfully complete the automotive programs. The student should discuss with their advisor the timeline for purchasing specific tools and suggested optional tools.

The College does not recommend, nor endorse, any specific brand of tools. The student should give careful consideration when selecting tools he/she will use in their career.

1ST SEMESTER REQUIRED - FIRST DAY OF SECOND WEEK

- Terminal Removal Tool - (for Computer Control Terminal)
- Ear protection
- Pen/Mini-Mag light w/batteries
- Air chuck/ Tire pressure inflator
- Tire psi gauge
- Valve core tool
- Rubber tip air nozzle
- Antifreeze tester
- Pick set (4 piece)
- Magnetic pick up tool (telescoping)
- Inspection mirror
- Pocket Screwdriver

- Tool bag that accommodates items above
- Fluke 87 or 88 Multimeter (ASEP Fluke 87 required)
- *Punch and Thread Kit (alum. Block) \$9.90
- *Jumper wire set
- *Safety glasses (min. Z87 rated)
- Program Uniform Shirts
 - *AUTO - 3 minimum
 - Dealer programs (Ford, GM) will have apparel provided by the Dealer

WELDING EQUIPMENT

- (needed either 1st or 2nd semester depending on program)
- Burn Jacket or Welding Leathers
 - Safety Glasses with side shields
 - Gauntlet style welding gloves
 - Auto darkening welding helmet
 - ("Grind Mode", #5 shade for oxy acetylene, and a #10 shade)
 - MIG welding pliers (must be able to cut .035" welding wire)

- Ear Plugs (3 Pair)
- Leather Boots
- Denim pants (No holes or tears in them)
- Welding Beanie (optional but beneficial)

*May be purchased at the SCC Parts or Campus store

2ND SEMESTER REQUIRED - FIRST DAY OF SECOND SEMESTER

TOOL STORAGE

- Roll-Away - 56" max length

1/4" DRIVE

- Socket Set 3/16"-9/16" shallow 6 pt.
- Socket Set 3/16"-9/16" deep 6 pt.
- Socket Set 5-14 mm shallow 6 pt.
- Socket Set 5-14 mm deep 6 pt.
- Extensions (3) 2", 4", 6" or equiv
- Ratchet
- Drive handle (screwdriver type)
- Universal joint

3/8" DRIVE

- Socket Set 3/8"-3/4" shallow 6 pt.
- Socket Set 3/8"-3/4" deep 6 pt.

- Socket Set 8-19 mm shallow 6 pt.
- Socket Set 8-19 mm deep 6 pt.
- Socket Set Torx T10-T60 (1/4" and/ or 3/8" drive)
- Socket Set Allen/Hex 1/8"-3/8"
- Socket Set Allen/Hex 4-10 mm
- Spark plug sockets 5/8" and 13/16"
- Extensions (5) 1", 3", 6", 12", 36"
- Ratchet, standard
- Ratchet, long flex head
- Speed handle
- Universal joint

1/2" DRIVE

- Socket Set 10-24 mm shallow
- Socket Set 10-24 mm deep Impact
- Sockets, 30, 32, 34 & 36 mm deep impact
- Socket Set, Lug nut
- Extensions (3) 3", 6", 12" or equiv.
- Ratchet
- Breaker bar, 24" min
- 1/2" Impact universal with lock button
- 1/2" Impact wrench

SCREWDRIVERS

- Standard (5) 1/8", 3/16", 1/4", 5/16", 3/8" including stubby
- Phillips (4) #1, #2, #3 and #2 stubby
- Tamper Proof Torx Screwdrivers (T10-T30)

PLIERS

- 6"slip joint combination
- 7"Diagonal cut
- 6"Needle nose
- 10"(min) Adjustable Joint
- Vise-Grip (3) 5" curved, 10" curved, 6" long nose
- Fixed tip Snap ring convertible 6" & 8" straight tip .038" .045" & .070"
- Lock ring pliers

PUNCHES/CHISELS/FILES/SAW

- Punch & Chisel Set (Minimum 12 piece - must include center punch)
- Brass drift 8" min. (12" recommended)
- Files (3) 10" flat, 8"round, 6"Tri
- File card
- File handle
- Half round/cape chisel

MEASURING INSTRUMENTS

- Feeler gauges (2) Straight and angled (.0015-.025 w/metric equiv)
- 6" steel ruler w/ std. and metric display
- Thread pitch gauges, (2) std. & metric
- Tape measure, 12' min.
- Caliper, 0-6"
- Torque wrench, 3/8" drive 15-100 ft/ lb or equiv.
- Torque wrench, 1/2" drive 40-250 ft/ lb or equiv.
- Digital Torque wrenches with angle measurement is recommended.

WRENCHES

- 1/4"-1 1/4" standard combination 12 pt.
- 6-24 mm standard combination 12 pt.
- Adjustable Wrench, 12"
- Flare Wrench Set 3/8" -11/16"
- Flare Wrench Set 9-18 mm

HAMMER

- Ball Peen, 16 oz.
- Ball Peen, 32 oz.
- Dead Blow, 24-28 oz.

BRAKES TOOLS

- Brake adjusting spoon
- Brake Retaining Spring Tools (2) large and small
- Brake Spring Tool

MISCELLANEOUS

- Spark plug gapper -wire type - .025-.045 and .040-.080
- Spark Tester
- A/C Thermometer
- Lip seal tool
- 12" Hacksaw w/ blades
- Allen Wrenches Metric set 4-12 mm
- Stethoscope
- Pry bar, 24" min (Set with more than one length is recommended)
- 16" rolling head bar
- Fender covers (1pair)
- Wire brush, 10" min
- Adapters (4) 1/4-3/8, 3/8-1/4, 3/8-1/2, 1/2-3/8
- Gasket scraper
- Oil filter Pliers (slip joint)
- Oil filter band wrenches (2)

RECOMMENDED

- Socket Set 3/8" drive 10mm-19mm flex impact
- Socket Set 3/8" drive Inverted Torx E6-E16
- Socket Set 3/8" drive 10-19mm deep Impact
- Socket Set 1/2" drive 3/8-1 1/4 shallow
- Socket Set 1/2" drive 7/16-1 1/4 deep Impact
- Socket Set 1/2" drive 10-24mm deep chrome
- Automotive Terminal Test lead kit
- Metric ratcheting wrenches
- 8/10mm brake wrench - for bleeder screws
- 6-19mm combination stubby wrench set
- Assorted trim panel removers
- 3/8" Air or cordless Impact
- 3/8" Air or cordless ratchet
- Hose Clamp Pliers
- Spark plug boot pliers
- Needle nose pliers set long (3)
- Large dead-blow hammer, 36 oz or larger
- Brass Hammer
- Hand vacuum pump with gauge